

Quick Start Guide

POWERSCAN D8590

Handheld DPM Imager



P/N 83-306170 Rev A

Step 1 — Check Required Hardware

Parts List for USB POWERSCAN D8590:

1. One POWERSCAN D8590 Handheld DPM Imager
2. One 12 ft. USB cable (pre-attached to imager)

Parts List for RS-232 POWERSCAN D8590:

The RS-232 cable is affixed to the handle with two screws, a spacer, and a cable clip, which can be removed.

1. One POWERSCAN D8590 Handheld DPM Imager
2. Cable clip attachment
3. Spacer
4. Two threaded screws
5. RS-232 Interface Kit
 - 8 ft. coiled RS-232 cable
 - Power supply (U.S. Euro, or UK)

Step 2 — Set Up Hardware (USB)

Note: The USB interface draws its power from the host.

Hardware for USB

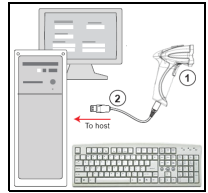
1	POWERSCAN D8590 DPM Imager, USB	PD8590-DPM
2	USB Cable	Included

Installation Steps for USB

1. Connect the USB cable to the host.
2. Open any program in your host computer that can receive keyboard text, such as Notepad.
3. Read the **Reset to USB Factory Defaults** symbol below.

Note: If you want symbol data to be entered as keyboard text, read the **USB Keyboard Mode** symbol below.

4. Read the **Save Settings** symbol below.



USB Configuration



M049_03
Reset to USB Factory Defaults



M134_02
USB Keyboard Mode



Test Symbol



M188_02
Save Settings

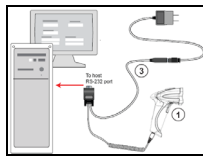
Step 2 — Set Up Hardware (RS-232)

Hardware for RS-232

1	POWERSCAN D8590 DPM Imager, RS-232	PD8590-DPM
3	Kit, RS-232, 8' coiled, US power supply	CAB-532-KUS
	Kit, RS-232, 8' coiled, EU power supply	CAB-532-KEU
	Kit, RS-232, 8' coiled, UK power supply	CAB-532-KUK

Installation Steps for RS-232

1. Power-off host.
2. Connect 8-pin mini-DIN on cable to POWERSCAN D8590.
3. Connect 9-pin D-sub connector to host's serial port.
4. Connect cable to power supply.
5. Plug in power supply and power-on host.
6. Start a terminal program (such as Datalogic ESP's Terminal or HyperTerminal) and set to **57.6K** baud, **8** data bits, **none** parity, **2** stop bits.
7. Read the **Reset to RS-232 Factory Defaults** symbol, then the **Save Settings** symbol.



RS-232 Configuration



M418_02
Reset to RS-232 Factory Defaults



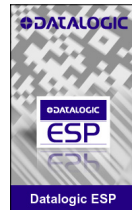
Test Symbol



M188_02
Save Settings

Step 3 — Install ESP

- Click on the ESP icon to run Datalogic ESP.



Note: Datalogic ESP can be installed from the **Support Area** at www.adc.datalogic.com.

Minimum System Requirements

- 166 MHz Pentium processor (Pentium II processor recommended)
- Windows Vista, XP, or 2000 operating system
- Internet Explorer 5.0 or higher
- 64 MB minimum RAM (128+ MB RAM recommended)
- 80 MB hard drive space
- 800 x 600 minimum 256 color display (1024 x 768 32-bit color recommended)

Important: The imager must be in USB or RS-232 Mode to connect to **ESP**. Read the symbol below that corresponds with your communication interface, and then read the **Save Settings** symbol.



USB Mode



RS-232 Mode

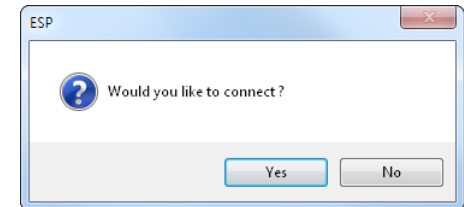


M188_02
Save Settings

Step 4 — Select Model

When you start **ESP**, the model menu will appear.

1. Click the POWERSCAN D8590 button and then click **OK**. If you do not want to make this selection every time you start **ESP**, uncheck "Show this dialog at startup".
2. Select the default imager name (**POWERSCAN D8590-1**), or type a name of your choice in the **Description** text field and click **OK**.
3. Click **Yes** when this dialog appears:



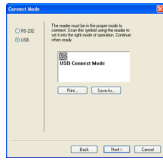
Step 5 — Select Protocol

Select the communications protocol you are using and click **Next**.

USB

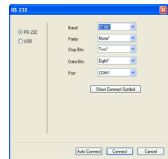


From the default USB settings, click the **Switch Mode** button to connect to the reader in USB HID Mode.



1. Print **USB Connect Mode** symbol (also shown in **Install Datalogic ESP** step) and decode it with the imager to ensure that you are in the correct communications mode. Keep printed symbol in a convenient place for future use.
2. Click **Next** when you are finished, and then click **Connect** when you see the "Reader ID" number in the **Select Device** field.

RS-232



Click the **Show Connect Symbol** button for **RS-232 Connect Mode** symbol.



Select **RS-232** and click the **Show Connect Symbol** button. Print the **RS-232 Connect Mode** symbol and decode it to ensure that you are in the correct communications mode. Keep the printed symbol in a convenient place for future use. Click **Next** to return to the **RS-232** dialog. Configure RS-232 settings and COM port and click **Connect**.

Step 6 — Connect to ESP

USB

Once you have clicked **Connect** in the USB imager ID dialog (**Step 5**), the **CONNECTED** message will appear in a green box in the status bar at the bottom right of the screen.

CONNECTED USB HID

You are now ready to configure the USB POWERSCAN D8590 using **Datalogic ESP**.

RS-232

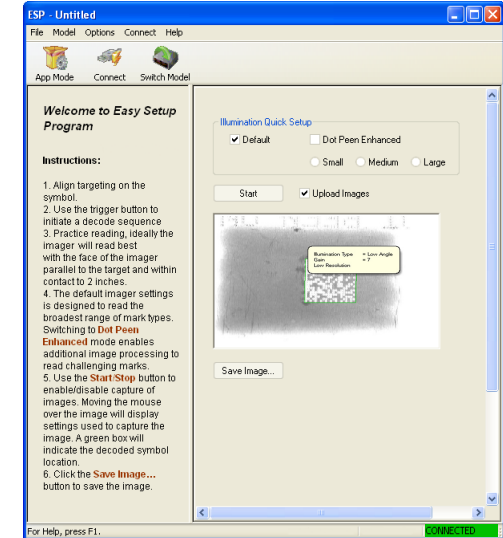
Once you have selected RS-232 settings and COM port and clicked **Connect**, the **CONNECTED** message will appear in a green box in the status bar at the bottom right of the screen.

CONNECTED Point-to-Point COM1

You are now ready to configure the RS-232 POWERSCAN D8590 using **Datalogic ESP**.

Step 7 — Configure the Imager

Datalogic ESP's **EZ Mode** is the first view that appears once you are connected. This view features simple instructions and tools for decoding symbol data and capturing images.



From here, you can click on **App Mode** to access tree controls and graphic user interfaces with more comprehensive configuration options.

Step 8 — Practice Decoding

The POWERSCAN D8590 features simple blue targeting LEDs to indicate optimal read range.



1. Hold the imager about 6" from the mark and align the blue targeting pattern as shown here.



2. Move the front of the imager steadily downward toward the mark and parallel to the mark surface.
3. The imager will decode the mark at the optimal read distance – typically from the point of contact to .50" (contact – 12.70 mm).



Test Symbol

Frequently-Used Settings

The following programming symbols allow you to control **USB Keyboard Mode**, **Targeting** settings, and **Beep and Vibration** settings.



USB Keyboard Mode

M134_02



Targeting LED On (Default)

M734_01



Targeting LED Off

M735_01



Vibrate On / Beep On (Default)

M107_01



Vibrate On / Beep Off

M109_01



Vibrate Off / Beep On

M108_01



Save Settings

M188_02

Illumination Quick Setup

The following programming symbols allow you to set up and control **Dot Peen Enhanced** illumination settings.



Illumination Default Mode

Q044_01



Dot Peen Enhanced Illumination Mode - Large Mark

Q045_01



Dot Peen Enhanced Illumination Mode - Medium Mark

Q046_01



Dot Peen Enhanced Illumination Mode - Small Mark

Q047_01



Save Settings

M188_02