

## LIGHTER SUITE 7.1.3 – RELEASE NOTES

This document describes the SW Release **LIGHTER 7.1.3** for **Laser Marking Devices**, to extend MARVIS™ functionalities to MATRIX 220 readers.

- *Models Supported*
- *Support for MARVIS™ functionalities*
- *Important Remarks*
- *New Features & Improvements*
- *Changes and Fixes*
- *Known Issues*
- *Tools & Documentation*
- *Release History*

## MODELS SUPPORTED

---

LIGHTER 7.1.3 is compatible with the following LM devices:

- AREX XXX-X64 (AREX400 PRO models)
- AREX XXX-X54 (AREX400 BASIC models)
- AREX XX00-1X42
- AREX20-MW A200-1X53
- UNIQ 1150-1X40
- VLASE 1X09-1X42
- EOX 6X02-1X40
- ULYXE 1066-1XXX

## SUPPORT FOR MARVIS™ FUNCTIONALITIES

---

MARVIS™ DPM code grading functionalities in 7.1.3 are fully qualified for the following LM devices:

- AREX XXX-X64 (AREX400 PRO models)
- AREX XXX-X54 (AREX400 BASIC models)
- AREX XX00-1X42
- AREX20-MW A200-1X53
- UNIQ 1150-1X40
- VLASE 1X09-1X42

and for the following MATRIX family devices :

- MATRIX 120 X1X-01X
- MATRIX 210N 2XX-X1X (DPM illuminator and YAG filter recommended)
- MATRIX 220 3XX-010 (DPM illuminator and YAG filter recommended)
- MATRIX 300N 4XX-01X (DPM illuminator and YAG filter recommended)
- MATRIX 410N XXX-X1X (DPM illuminator and YAG filter recommended)

Installed FW package is **1.6.3.50** for MATRIX 220 and **1.5.1.606** for the remaining MATRIX models.

## IMPORTANT REMARKS

---

This software distribution includes **LIGHTER 713\_RTM\_695 installer \*.EXE** (approx.140 MB) and some utilities and docs.

### MARVIS LICENSE

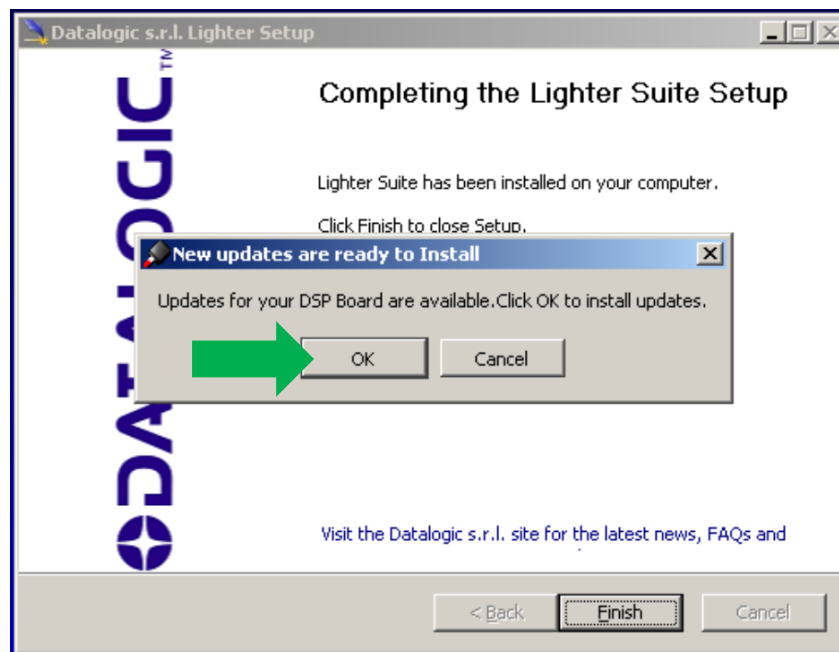
Due to some improvements in MARVIS™ license protection, **on some devices where LIGHTER 7.0.1 or 7.0.0 were manually installed as upgrades of existing versions, the existing MARVIS™ FULL / EVAL licenses may be disabled after installing LIGHTER 7.1.3. Laser machines shipped with LIGHTER 7.0.2 or newer pre-installed in factory by DATALOGIC (see unit's datasheet) will not be affected.** For more info, contact Technical Support with the device serial number and SW version at hand (*LaserEditor > Help > About*) before starting the upgrade. Installation of 7.1.3 on 7.0.0 / 7.0.1 devices where MARVIS™ is not used or expired will not affect general LIGHTER functionalities. Installation of 7.1.3 on version 6.4.0 or older will grant 30 days MARVIS™ evaluation period.

### NEW FPGA FOR IMARK EMBEDDED SYSTEMS

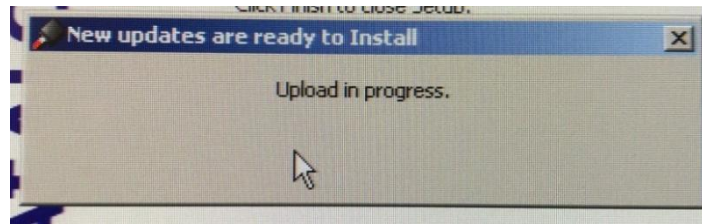
LIGHTER 7.1.3 brings new FPGA software for the following LM families:

- AREX XX00-1X42
- VLASE 1X09-1X42
- EOX 6X02-1X40

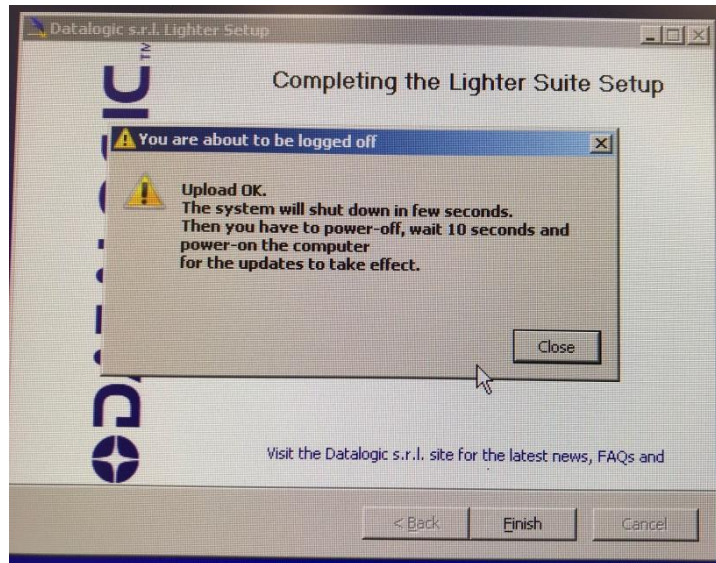
During LIGHTER upgrade, when prompted by a message box **“Updates for your DSP Board are available”**, click **OK** to install the updates:



Wait for the process to finish:

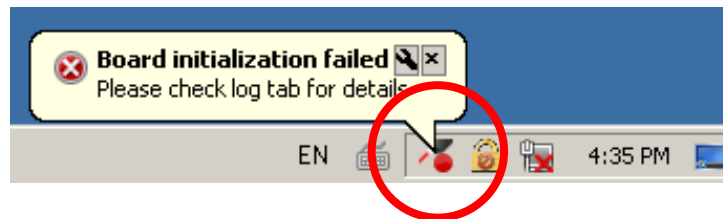


After DSP upgrade, the installer will finish normally and the PC will shut down automatically after a message box "Upload OK". Click *Close*, or wait:

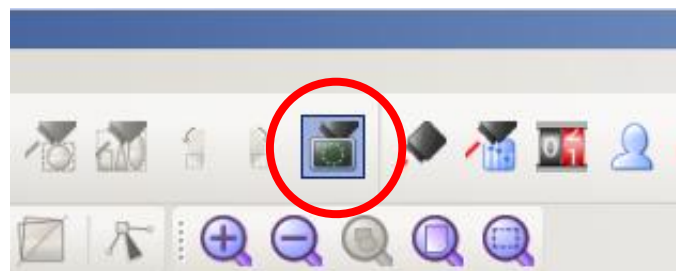


At the next restart after an upgrade to 713 (or after a recovery with a SW image containing 713) *LaserEngine* will go in simulation mode; check the following clues:

- A. Red LaserEngine icon, even when KEY=0 and ENABLE=0.  
 Popup "**Board initialization failed**. Check log tab for details".



- B. Simulator active.



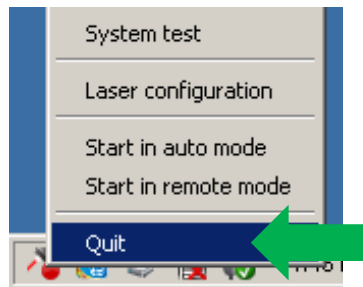
- C. Line in *LaserEngine* log “**ERROR(LE) Platform::initDevices(): Unable to start control board, switching to simulation**”.

```

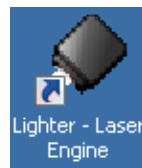
2019-04-16 16:43:11:130 DEBUG (xLaser) xLaserDevice::UpdateSettings: MOf
2019-04-16 16:43:11:130 DEBUG (xLaser) xLaserDevice::UpdateSettings: Update Axis Settings
2019-04-16 16:43:11:130 INFO (LE) Platform::initDevices(): Loading board: Evaluator
2019-04-16 16:43:11:130 DEBUG (LE) Platform::setDeviceSignals()
2019-04-16 16:43:11:130 DEBUG (xLaser) xLaserDevice::RunBoard()
2019-04-16 16:43:11:130 DEBUG (xLaser) xLaserDevice::IsHandleValid(): Device unplugged
2019-04-16 16:43:11:130 INFO (LE) Platform::startDevice(): nReturnCode 0x400000
2019-04-16 16:43:11:130 ERROR (LE) Platform::initDevices(): Unable to start control board, switching to simulation
2019-04-16 16:43:11:145 DEBUG (LE) Platform::setDeviceSignals()
2019-04-16 16:43:11:145 DEBUG (xLaser) xLaserDevice::RunBoard()
    
```

**PROCEDURE**

1. Right-click on *LaserEngine* icon in tray bar and **Quit** *LaserEngine*.



2. Re-launch *LaserEngine* (double-click) from desktop.



3. The *LaserEngine* icon should turn green (if KEY=0 and ENABLE=0) and the laser will be usable.



4. Double click on “**save-data**” batch file on desktop. A message box informs to restart or shutdown the system in order to permanently save data. Press OK.



5. **Shut down** the system in order to save the new settings



**WARNING!**

**DO NOT** turn **OFF** or **UNPLUG** the system while Windows® is shutting down.

6. WAIT until the system shuts down automatically (black screen).
7. **Power off** the system to complete installation.
8. At following restart, *LaserEngine* icon will be green steady (with KEY=0 and ENABLE=0) and the system will not be in simulation mode anymore.

**NOTE ON MS VISUAL C++ REDISTRIBUTABLES**

LIGHTER 7.1.3 installer will auto-install the following SW:

- Microsoft Visual C++ 2010 x86 Redistributable Setup  
File: vc100redist\_x86.exe  
Version: 10.0.40219.1
- Microsoft Visual C++ 2017 Redistributable (x86)  
File: vc\_redist.x86.exe  
Version: 14.16.27027.1

If newer versions of redistributables are found installed ex. on a laptop, LIGHTER Suite installer will abort. You can apply the workaround of uninstalling the newer redistributables, launch and finish LIGHTER Suite installer, and finally reinstalling your redistributables.

**NOTE ON WINDOWS XP**

Windows XP or Windows XP PRO on non-embedded computers are not supported.

## NEW FEATURES & IMPROVEMENTS

---

- MARVIS™ support for MATRIX 220 models.

## CHANGES AND FIXES

---

- (91589) [TcpServer script] "Get Match Result" F6 81 should return 0 if a symbol is found, but not matched.
- (86645) [AREX400] [Laser Engine] [MARVIS] [Matrix220] [External Illuminator] : The external illuminator is always turn on instead of only during the reading or setup phase
- (91714) [EthernetProtocol] [TcpServer] 'Set Imported Field Value' command generated an error inside the TcpServer script version
- (91717) When executing TcpServer or EthernetProtocol scripts, after the marking process the local counter preview does not increase.
- (91766) [Lighter Suite] [Std Ethernet manual] [Get System Time command] : The description for the 0xF1 0xA1 command isn't correct
- (91929) [Script] \*.BMP imported via script is rescaled smaller than the size it has when it's imported directly in LaserEditor.
- (92305) [Lighter Suite] [TCPsServer manual] [Get Marvis Status command] : The description for the 0xF6 0x91 command isn't correct
- (92528) [Laser Engine] [Auto mode] [MARVIS] [Delayed mode] [Sequence document] At each marking event, the global counter isn't incremented

## KNOWN ISSUES

---

- (46973) EDITOR: AIMING BEAM with CLONES property doesn't work correctly
- (47430) ENGINE: by REMOTE MODE and in WAIT FOR START state, if I press EXTERNAL START, the system begins the marking.
- (48420) ENGINE: in MoF mode, when set some values of DISTANCE parameter, the system doesn't work correctly (or even crashes)
- (48652) EDITOR - Datamatrix with Contour + Pocketing +Angle is not filled correctly
- (48980) EDITOR: SEND MARKING ON SELECTION command disables the objects after mark all enabled objects, in addition to selected object.
- (49232) VLASE-20IR - Lighter 6.2.3 15944 - "Bad marking error" in MOF for scale X > 101.8
- (49236) Lighter 6.3.1 16272 - Material DB changes not transferred to XLPs in Engine
- (49417) Lighter 6.3.1 16272 - DXF rescaled after importing
- (61766) When 'Set I/O port' command is sent to turn on only OUTPUT 1 (or only OUTPUT 12), also OUTPUT 12 (or OUTPUT 1) is turned on at the same time

- (62750) ENGINE: When the wrong 'Move and rotate document' command is sent, no command can be sent
- (63634) If the photocell doesn't have the reflector in front (and no signal goes back to it from reflector), by pressing and releasing the Stop from the Command Box, the marking doesn't stop and starts again
- (65815) [JULYXE] ENGINE: no status refresh after pressing STOP button with external CBOX
- (67437) Disconnection is caused from Supervisor to Laser Marker when Supervisor requests to open a XLP file not present on the Laser
- (67475) EIP - Move Axis Command does not pull down Mirroring Bit and during the movement it turns the 'Start Marking' Mirroring Bit HIGH
- (70599) Ulyxe USB driver signature not recognized on some Win10 PC
- (71759) import filter AI (Adobe Illustrator) & PDF does not respect scale
- (76937) [AREX400] [Laser Editor] [Layer] [Limits] : The projection of limits is interrupted by moving an object and an 'Overrun Error' is shown
- (77433) [Lighter][Std-RS232] NUL config.txt file blocks the execution of the Std-RS232 script
- (79730) [Axis] [Laser Engine] [AREX-20MW] Script Axis.move() function call generates a delayed Axis movement
- (79741) [LaserEditor][PRJ import] Wobble parameter is applied incorrectly when importing Smartist 4.1 files
- (80013) [MARVIS][QualityGradeTraning] In QGT, if the symbol contains references to local or global variables, code match will fail because the variables are not updated.
- (80607) [Laser Engine] [Laser Configuration] [MARVIS] [Images] : The default path isn't correct
- (81322) [Rotor axis] Vectorial graphics with holes are marked with extra lines on a rotor device when Sector Size >0.
- (87390) [VLasell] [Lighter Suite] [Driver PCI] : After upgrade to 712, the installation of the new driver ends after the Laser Engine is started.
- (87885) [AREX3] [Lighter Suite] [Driver PCI] : After upgrade to 712, the initialization of the control board isn't successful the first time
- (88046) [Lighter Suite] [iMark platform] [Start marking signal] : By releasing the external Stop command from the Cbox, a start event will be notified in the System test window
- (88426) If INCREASING MOTOR STEP is set in Axis configuration, the DIRECTION of generic movement must be reversed compare to DECREASING MOTOR STEP
- (88789) [Ulyxe DSP] [Laser Engine window] [Statistics tab] : By turning the KEY of the Cbox from 1 to 0, the Marking OK event is notified
- (90299) [MARVIS] [M220] [Ext illuminator] If "Internal Lighting = Disabled", external illuminator is not activated [ref. #85956]
- (91762): [TcpServer] If an object is BLOCKED, the command 'Move and Rotate Document' does not move the document starting from its origin
- (92393) [ActiveX] When connecting via Remote ActiveX Interface an external application to Laser Engine, start marking and start limit commands fail

- (92520) [Laser Engine] [Auto mode] [MARVIS] [Delayed mode] [Start marking] : By clicking again Start from the external CBox, a new marking event is occasionally started
- (92779) [Product with iMarkI] After changing the correction parameters in Laser Configuration, the limits doesn't work the first time they are started
- (92781) [Product with iMarkI] After changing the parameters in Laser Configuration, the laser test doesn't work the first time it is started
- (93308) [Installer] [ActiveX registration] If Engine is set to "Start in Remote Mode", ActiveX registration will fail and installer will freeze

## TOOLS & DOCUMENTATION

---

The relevant support files and documentation are installed together with the LIGHTER SUITE applications (*Barcode Reference, EIP User Manual, Laser Dashboard Script Manual, Programmer Guide, StdEthernet Protocol manual, StdRS232 Protocol manual, Embedded TCP Server Manual, LIGHTER User Manual*) in "C:\Program Files ... \Lighter\7.1\Docs".

LIGHTER 7.1.3 installer will be published on DATALOGIC website.

## RELEASE HISTORY

---

- **LIGHTER 7.1.2**

Suite for AREX XX00-1X42, AREX20-MW A200-1X53, UNIQ 1150-1X40, VLASE 1X09-1X42, EOX 6X02-1X40, ULYXE 1066-1XXX, AREX XXX-XX4.

- **LIGHTER 7.1.1**

Suite for AREX400 models only (AREX XXX-X64, AREX XXX-X54).

- **LIGHTER 7.1.0**

Suite for AREX400 models only (AREX XXX-X64, AREX XXX-X54).

- **LIGHTER 7.0.2**

Suite for AREX XX00-1X42, AREX20-MW A200-1X53, UNIQ 1150-1X40, VLASE 1X09-1X42, EOX 6X02-1X40, ULYXE 1066-1XXX.

- **LIGHTER 7.0.1**

Suite for AREX XX00-1X42, AREX20-MW A200-1X53, UNIQ 1150-1X40, VLASE 1X09-1X42, EOX 6X02-1X40, ULYXE 1066-1XXX.

- **LIGHTER 7.0.0**

First suite with MARVIS™ DPM code grading functionalities, for AREX XX00-1X42, AREX20-MW A200-1X53, UNIQ 1150-1X40, VLASE 1X09-1X42.